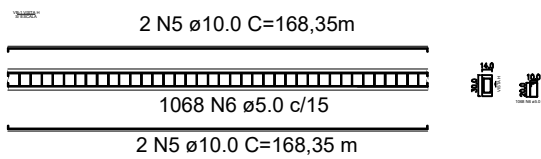
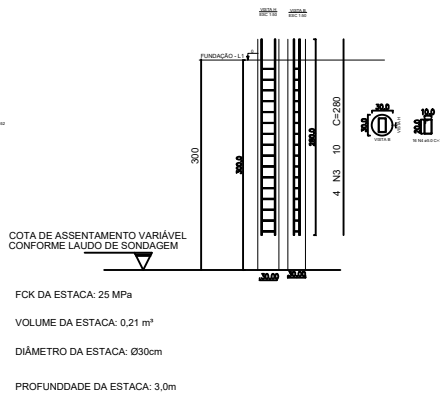
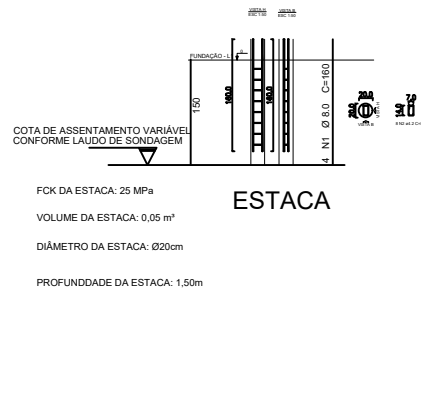
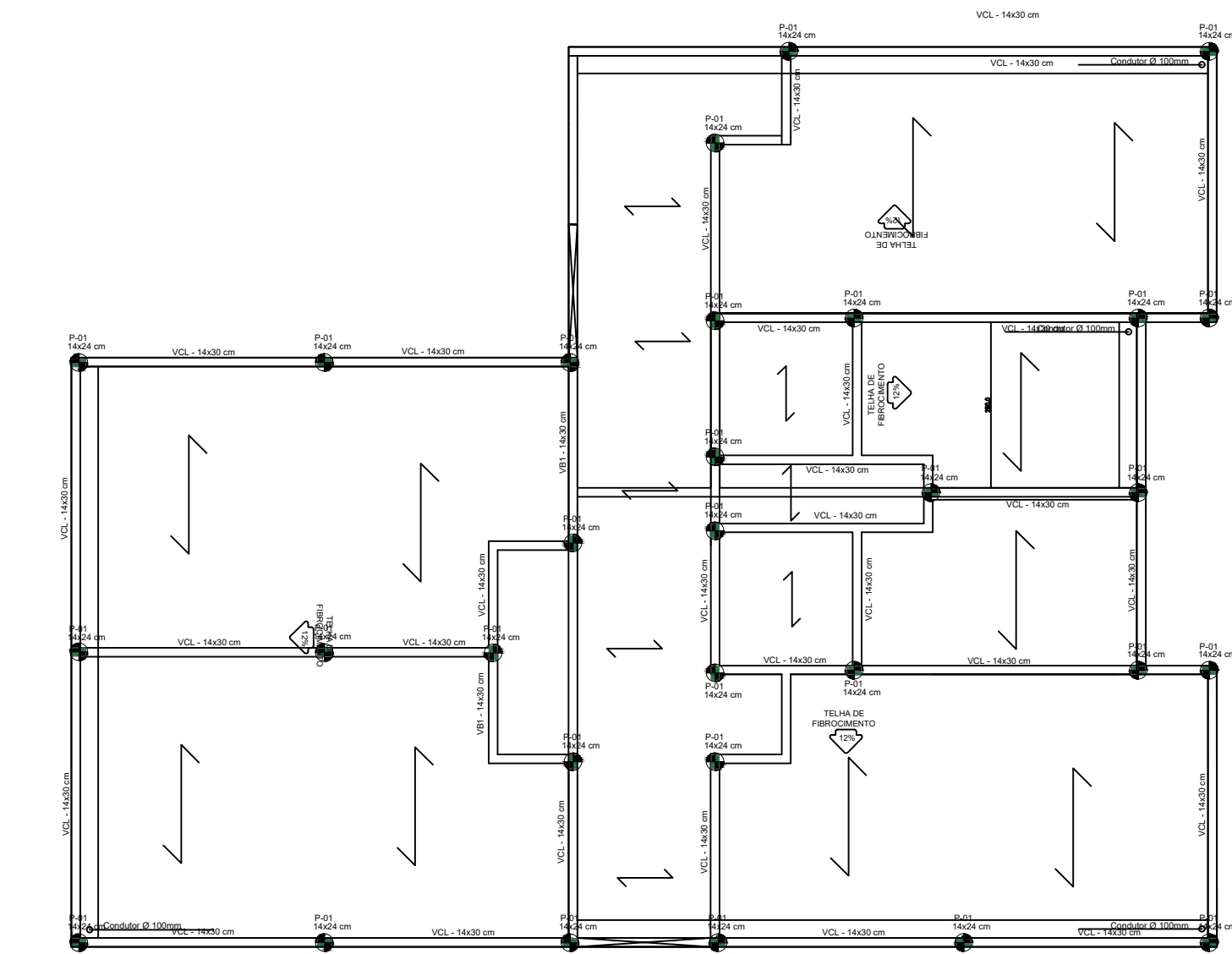


7 Un. - P-02

30 Un. - P-01

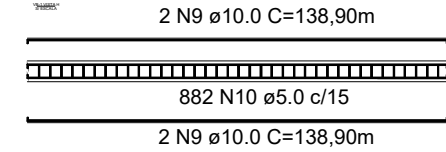
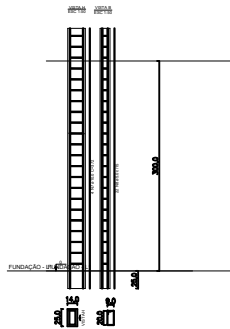


VIGAS BALDRAME



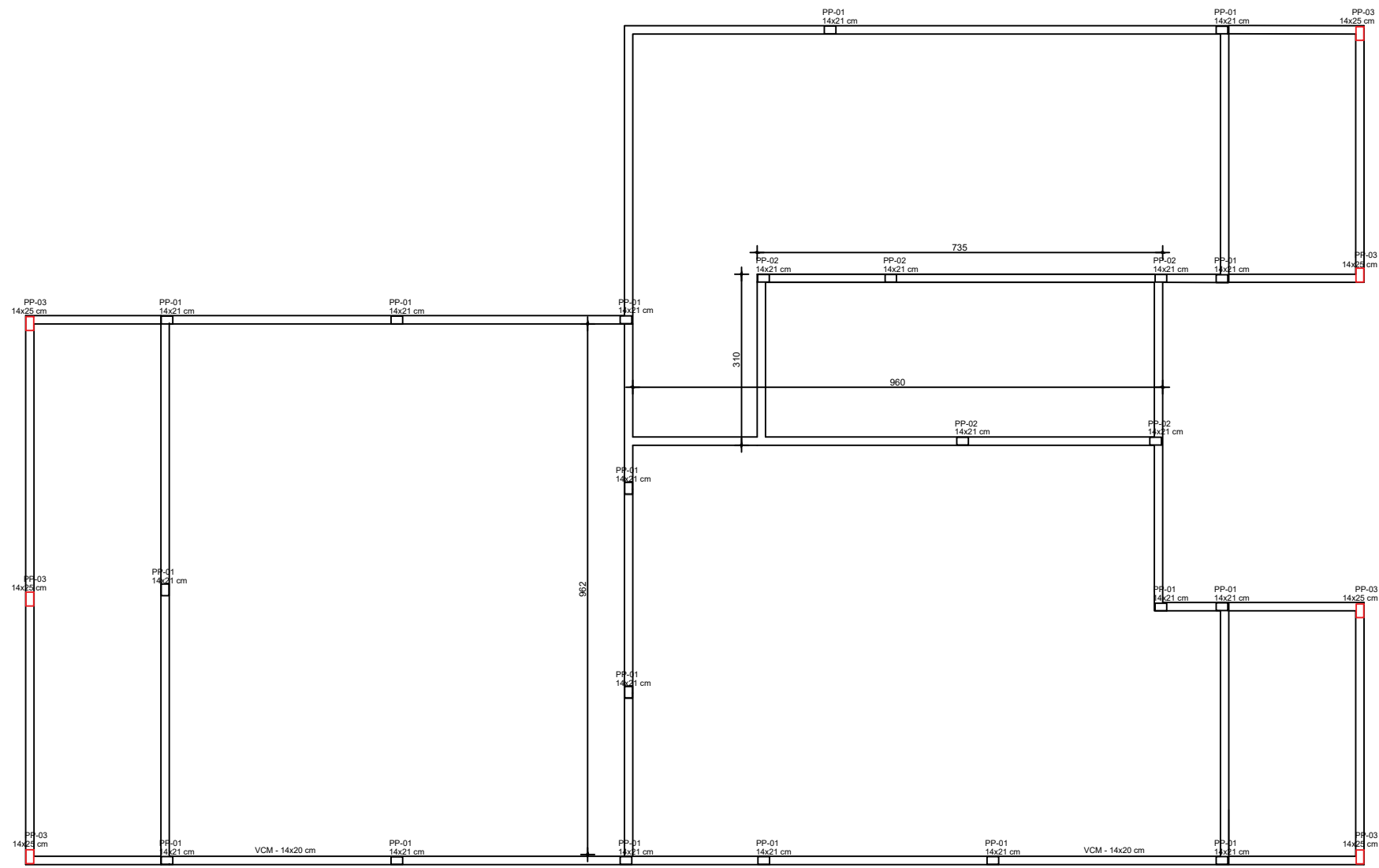
COBERTURA

30 Un. - P-01

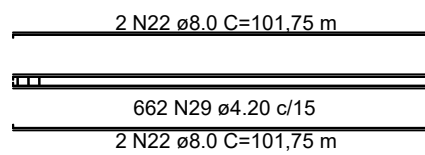
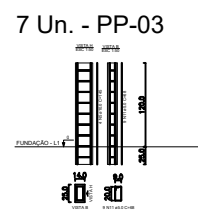
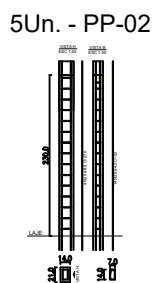
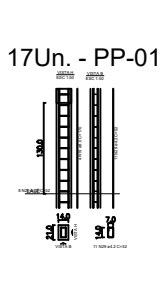


VIGA CINTA

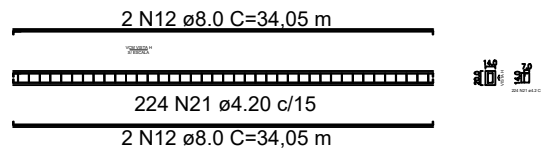
RESUMO DO AÇO				
AÇO	N	DIAM (mm)	C.TOTAL (m)	TOTAL (KG)
CA50	1	8.0	44.80	17.70
	3	10.0	336.00	207.31
	5	10.0	673.40	415.49
	7	10.0	446.40	276.43
	9	10.0	555.60	342.81
CA60	2	4.2	29.12	3.17
	4	5.0	336.00	51.74
	6	5.0	747.60	115.13
	8	5.0	448.80	69.12
	8	5.0	617.40	95.08



PILARES E CINTA PLATIBANDA



VIGAS CINTA PLATIBANDA



VIGAS CINTA MURETA

PROJETO PROJETO ESTRUTURAL - SALAS CMEI MARIA FRANCO		FOLHA: 01/01
CONTEÚDO: DETALHAMENTO DA FUNDAÇÃO, VIGAS, PILARES E VIGA CINTAS		
RRT: Nº RRT :	<hr/> PROPRIETÁRIO: PREFEITURA MUNICIPAL DE PERDIZES PREFEITO: FERNANDO MARANGONI <hr/> PROJETO ESTRUTURAL: ENG. ANIVALDO LUIS DOS REIS JUNIOR CREA: 225.171/D	
OBS.:		